



Recessed Panel with optional Thames design trim inserts and Alpine handles, in Sandtone.

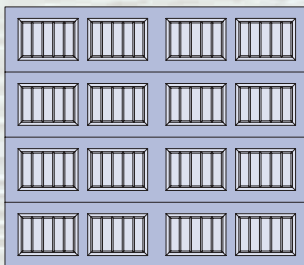


Long Bead Board panel with optional Sunrise design trim inserts, in Dark Brown.

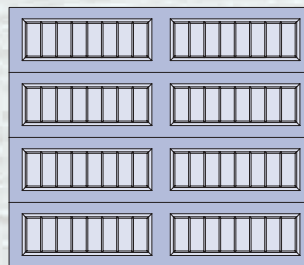
Self-expression shouldn't cost a fortune. With Delden's Vintage Collection, it won't. These durable steel doors offer an attractive carriage house look. Choose from a variety of door colors, decorative hardware, and window accents. Customize your home with Delden's most affordable carriage house door.

- Door sections are furnished with a baked-on polyester top coat over hot-dip galvanized steel.
- All quality Delden hardware is hot-dip galvanized, including adjustable track, hinges, top and bottom fixtures and preformed aircraft-quality cable.
- Torsion and extension spring wire is tempered for long cycle life.
- Continuous weatherstrip conforms to out-of-level conditions and seals against inclement weather.
- Embossed finish simulates the beauty of real wood.
- Choose from multiple panel designs and colors to create the steel garage door that enhances the beauty of your home.

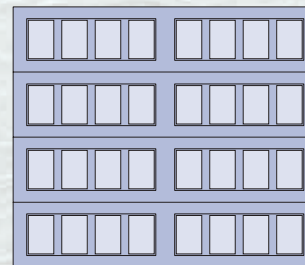
SQ • Bead Board



LQ • Long Bead Board



RE • Recessed

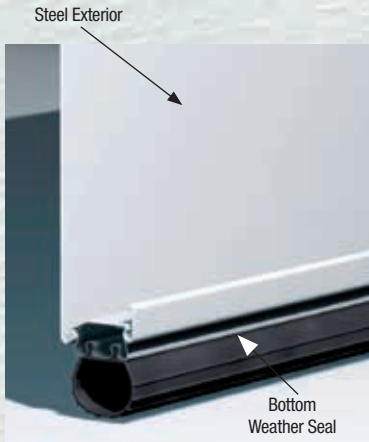


Create a safe, secure and beautiful complement to your home.



"Experience the Quality"





VIN-100

Delden's VIN-100 provides a heavy-duty steel door that is durable, reliable and low maintenance.

- *Series 1000 Single-Layer: Steel*
- *Heavy-Duty Exterior Steel*
- *11 Ball Nylon Rollers*
- *14 Gauge Standard On-Door Hardware*
- *High Cycle Springs*
- *Durable, Reliable, Low Maintenance*



VIN-200

Delden's VIN-200 combines all the low maintenance strength found in a VIN-100 model while adding thermal insulation and quieter performance.

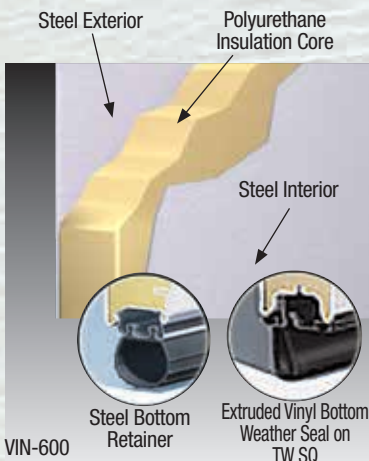
- *Series 2000 Double-Layer: Steel + Insulation*
- *Heavy-Duty Exterior Steel*
- *11 Ball Nylon Rollers*
- *14 Gauge Standard On-Door Hardware*
- *High Cycle Springs*
- *Durable, Reliable, Low Maintenance*
- *Environmentally Safe Polystyrene Thermal Insulation with Vinyl Backing*
- *Energy Efficient*
- *Quiet Operation*



VIN-300 (1³/₈") / VIN-400 (2")

This affordable collection delivers premium style and construction at a competitive price. A new tradition of style, performance and value.

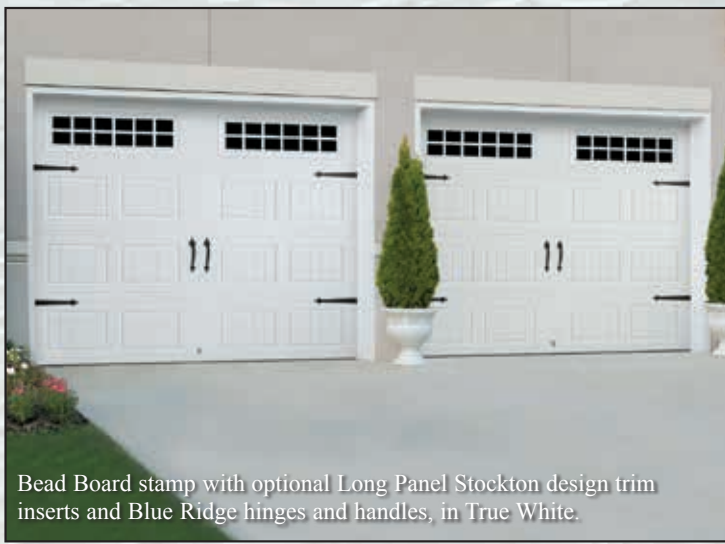
- *Series 3000 Triple-Layer: Steel + Insulation + Steel*
- *Heavy-Duty Exterior & Interior Steel*
- *11 Ball Nylon Rollers*
- *14 Gauge Standard On-Door Hardware*
- *High Cycle Springs*
- *Durable, Reliable, Low Maintenance*
- *Environmentally Safe Polystyrene Insulation*
- *Superior Energy Efficiency*
- *Extra Quiet Operation*
- *Available in 1-3/8" and 2" Profiles*



VIN-500 (1³/₈") / VIN-600 (2")

Delden's premium energy efficient doors are built with CFC free polyurethane thermal insulation.

- *Series 3000 Triple-Layer: Steel + Insulation + Steel*
- *Heavy-Duty Exterior & Interior Steel*
- *11 Ball Nylon Rollers*
- *14 Gauge Standard On-Door Hardware*
- *High Cycle Springs*
- *Durable, Reliable, Low Maintenance*
- *Environmentally Safe Polyurethane Insulation*
- *Superior Energy Efficiency*
- *Extra Quiet Operation*
- *Available in 1-3/8" and 2" Profiles*



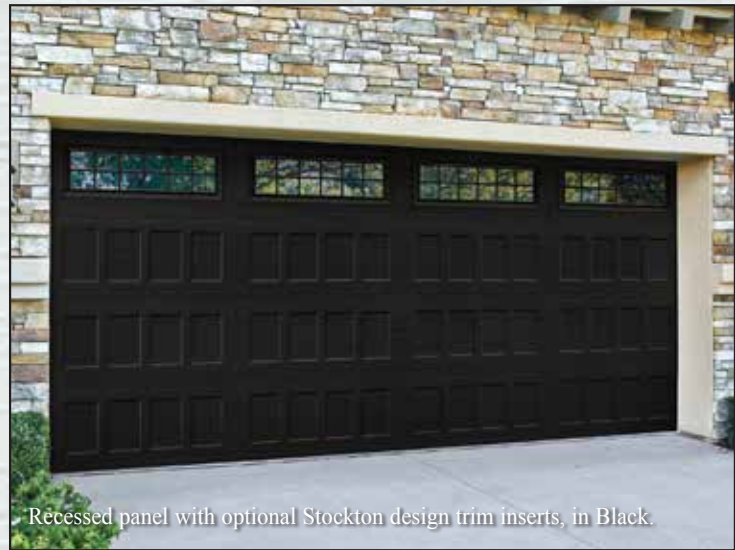
Bead Board stamp with optional Long Panel Stockton design trim inserts and Blue Ridge hinges and handles, in True White.



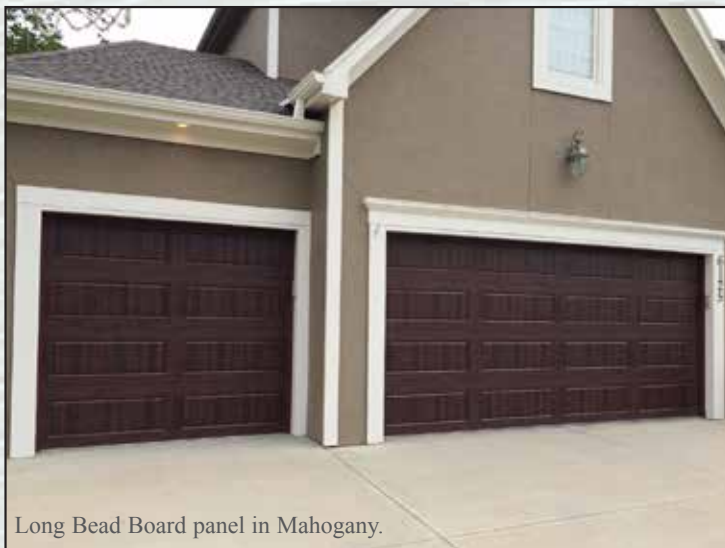
Long Bead Board panel with optional Moonlite design trim inserts and Blue Ridge decorative hardware, in True White.



Bead Board panel with optional Trellis estate glass windows, in Sandtone.



Recessed panel with optional Stockton design trim inserts, in Black.



Long Bead Board panel in Mahogany.



Recessed panel with Canterbury handles and hinges, in Walnut.



Bead Board



Long Bead Board



Recessed

OPTIONS

	VIN-100	VIN-200	VIN-300	VIN-400	VIN-500	VIN-600
Panel						
Bead Board (SQ)	✓	✓	✓	✓	True White	✓
Long Panel Bead Board (LQ)	✓	✓	✓	✓		✓
Recessed Panel (RE)	✓	✓	✓	✓		✓
Shadow Line 21" Sections					SQ	✓
Door Widths	All Standard Sizes	All Standard Sizes	All Standard Sizes	All Standard Sizes	8', 9', 16'	All Standard Sizes
Door Heights	All Standard Sizes	All Standard Sizes	All Standard Sizes	All Standard Sizes	All Standard Sizes	All Standard Sizes
Door Thickness	2"	2"	1 3/4"	2"	1 3/4"	2"
Insulation ¹		Polystyrene	Polystyrene	Polystyrene	Polyurethane	Polyurethane
Steel Thickness (actual)	25 ga	25 ga	27/27 ga	27/27 ga	27/27 ga	27/27 ga
U-Factor		.32	.27	.23	.24	.19 TW SQ
R-Value		6.84 ²	6.48 ²	9.05 ²	14.46	19.40 TW SQ / 13.35
End Stiles	Galvanized	Galvanized	Painted	Painted	Painted	Painted
Exterior Color Options						
True White (TW)	✓	✓	✓	✓	✓	✓
Almond (AL)	✓	✓	✓	✓		✓
Wicker Tan (WK)	✓	✓	✓	✓		✓
Sandtone (ST)	✓	✓	✓	✓		✓
Dark Brown (DN)	✓	✓	✓	✓		✓
Terratone (TT)	✓	✓	✓	✓		✓
Charcoal Gray (EF)	✓	✓	✓	✓		✓
Black ³ (BL)	✓	✓	✓	✓		✓
Color Zone ⁵	✓	✓	✓	✓	✓	✓
Woodgrain						
Walnut ⁵ (NT)	✓	✓	✓	✓		✓
Mahogany ⁵ (MY)	✓	✓	✓	✓		✓
Weathered Gray ⁵ (WZ)	✓	✓	✓	✓		✓
Wind Load Available ³	✓	✓	✓	✓	✓	✓
Window Glass Options						
Single Strength	✓	✓	✓	✓	✓	✓
Insulated			Clear, Frost, Dark Tint	Clear, Frost, Dark Tint	Clear, Frost, Dark Tint	Clear, Frost, Dark Tint
Bottom Weather Seal						
Extruded PVC			✓			
Extruded Vinyl				✓	✓	TW SQ
Steel Retainer	✓	✓				✓
Warranty⁴						
Paint Finish	15 Years	25 Years	Lifetime	Lifetime	Lifetime	Lifetime
Hardware	1 Year	2 Years	3 Years	3 Years	5 Years	5 Years

¹ Polystyrene insulation has passed self-ignition, flamespread and smoke developed index fire testing.

⁴ For complete warranty details, visit deldenmfg.com or contact your local Delden dealer.

² Calculated door section R-value is in accordance with DASMA TDS-163.

⁵ Price Upcharge Applies.

³ It is your responsibility to make sure your garage door meets local building codes.

¹ A Black garage door is not recommended for houses facing southwest and subject to extreme sun/heat exposure.

DELLEN DESIGN TRIM INSERTS

CLEAR **CATHEDRAL** **STOCKTON**

STOCKFORD **SUNRISE** **CASCADE**

WATERTON **SHERWOOD** **MOONLITE**

THAMES **ARCHED THAMES**

FULL SUNRISE LP 4 PANEL **THAMES LP SINGLE ARCH 4 PANEL**

MOONLITE LP SINGLE ARCH 4 PANEL

"Snap-in" design fastening system makes window cleaning and future design change easy to accomplish.

GLASS OPTIONS

CLEAR **OBSCURE** **FROST** **DARK TINT**

ESTATE GLASS™ Tempered obscure glass with baked-on ceramic designs.

VICTORIAN **HEARTLAND**

MISSION **JARDIN**

TRELLIS

COLORS Delden steel doors arrive pre-painted; for custom colors, exterior latex paint must be used. Ask your Delden dealer for instructions on painting.

TRUE WHITE ALMOND WICKER TAN SANDTONE TERRATONE DARK BROWN CHARCOAL GRAY BLACK WALNUT MAHOGANY WEATHERED GRAY

Refer to Exterior Color Options Chart

DECORATIVE HARDWARE

ALUMINUM

10 1/2" HANDLES **3 1/2" RING HANDLES** **9" HANDLES** **11" L-HINGE WITH CLAVOS**

17" STRAP HINGES WITH CLAVOS **18" STRAP HINGES WITH CLAVOS**

CANTERBURY **VERSAILLES**

STAMPED STEEL

11" HANDLES **BLUE RIDGE** **16" STRAP HINGES**

ALPINE **11" HANDLES**

STEEL

4" RING HANDLES

DELLEN

Delden reserves the right to change specifications and designs without notice and without incurring obligations. Some graphics and details provided courtesy of Amarr and used by permission.

Proudly Distributed By:

KANSAS CITY, MISSOURI



WIND LOAD APPROVED DOORS AVAILABLE



"Experience the Quality"
www.deldenmfg.com