

CDC-2000: 2" thick commercial performer.  
Available up to 480 square feet.

**Solid Commercial Construction Meets Variety and Style**

This commercial performer utilizes two-sided steel construction against an expanded polystyrene core to achieve maximum section rigidity.

Available features include thermally-broken sections at two points between interior and exterior skins to minimize temperature transfer. Self-lubricating polypropylene "wear seal" in section grooves to minimize air infiltration.

Available with a host of window, weatherseal and special lift options.

Delden Garage Doors has been known and respected for its standard of excellence since 1964. Careful attention to detail, the highest quality construction, and unique features are built into each and every Delden door. Regardless of model or style, you can be confident that the Delden door you choose is the finest available and will provide the utmost in security, beauty and value.



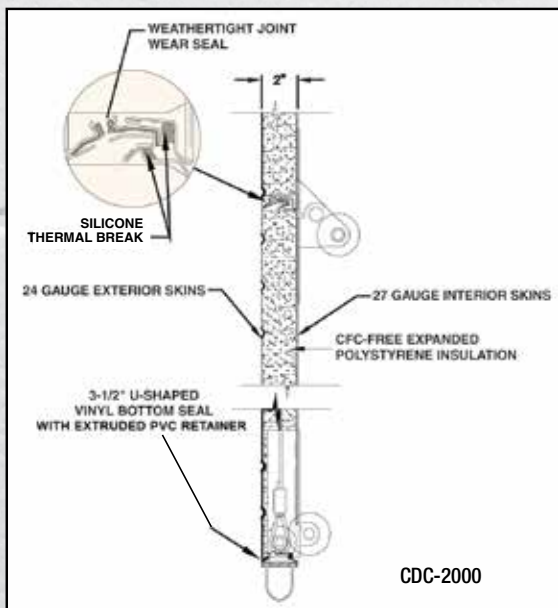
CDC-1380: 1-3/8" thick commercial performer.  
Available up to 224 square feet.



*"Experience the Quality"*







	CDC-1380	CDC-2027	CDC-2000
Steel Thickness (actual)	27/27 ga	27/27 ga	24/27 ga
U-Factor	0.26	0.25	0.25
R-Value <sup>1</sup>	6.7	9.4	9.4
Air Infiltration	N/A	.18 cfm/ft <sup>2</sup> @ 15 mph / .30 cfm/ft <sup>2</sup> @ 25 mph	18 cfm/ft <sup>2</sup> @ 15 mph / .30 cfm/ft <sup>2</sup> @ 25 mph
Thermal Break	✓	✓	✓
Self-Lubricating Wear Seal Strip	✓	N/A	✓
Bottom Weather Seal	Aluminum Retainer	Coextruded Vinyl	Extruded PVC Retainer
Baked-On Paint Finish (0.3 mil primer / 0.7 mil top coat)	✓	✓	✓
Maximum Standard Width	18' 2"	24' 2"	24' 2"
Section Heights	18", 21" & 24"	21" & 24"	21" & 24"
Door Thickness	1 3/8"	2"	2"
Maximum Standard Height	14' 1"	20' 1"	20' 1"
Exterior Color	True White, Almond, Wicker Tan, Sandtone	True White, Sandtone, Gray, Brown	True White, Sandtone, Gray, Brown
Wind Load <sup>2</sup> Available	16'-2" Maximum Width	16'-2" Maximum Width	16'-2" Maximum Width
Exterior Embossment	Woodgrain Flush	Stucco with Pencil Groove	Stucco with Pencil Groove

## OPTIONS

Available in a variety of colors. Delden offers a wide range of hardware and track specialties to accommodate various field conditions. This list includes, but is not limited to the following items:

- A wide range of perimeter weatherseals
- Adjustable bottom weatherstrip retainer rail
- Adjustable operator bracket for reinforced drawbar attachment
- Locking options, Exhaust ports, High Cycle torsion springs, Chain hoist

Custom widths and heights available (restrictions may apply).  
Insulation has passed self-ignition, flamespread and smoke developed index fire testing.

<sup>1</sup> Calculated door section R-value.

<sup>2</sup> It is your responsibility to make sure your garage door meets local building codes.

## CONSTRUCTION

Delden's CDC is of sandwich-type design, constructed of hot-dip galvanized interior and exterior steel skins adhered to an expanded polystyrene core with a specially developed adhesive. Thermal breaks on all models minimize temperature transfer. Section joint "wear seals" in models CDC-1380 and CDC-2000 provide additional protection against air infiltration. Hardware locations are reinforced with steel backup plates.

## EFFICIENCY

The expanded polystyrene core insulates against the elements with a very efficient R-Value. Air infiltration is minimized by a modified tongue-and-groove design that utilizes a polypropylene wear seal in models CDC-1380 and CDC-2000. This long lasting wear seal and joint design stop the weather elements at the face of the door and allow the internal thermal breaks to perform more efficiently. The accommodating bottom weatherstrip seals tightly against floors that may be rough or out of level. With a host of weather seal options for various jamb and header conditions, air infiltration is further minimized. Delden offers a fully "finished" opening that is aesthetically pleasing and thermally efficient.

## WINDOWS



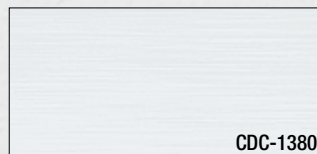
### CDC-1380 / 2027 / 2000

Windows shown with white frame. Available in DSB or Insulated Glass.

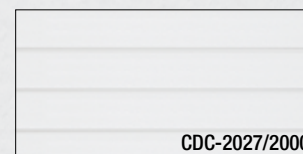
#### \*CDC-1380 only

Window frames available in True White, Almond, Wicker Tan, and Sandtone. Available in Clear or Obscure SSB. Clear Insulated or Non-Insulated DSB.

## PANELS



Flush Panel With  
Woodgrain Embossment



Pencil Grooved Panel With  
Stucco Embossment

## WARRANTIES

- 10-year Limited Warranty on the paint and finish for all models
- 1-year Limited Warranty on hardware for all models
- See your dealer or visit [deldenmfg.com](http://deldenmfg.com) for complete warranty details

Delden reserves the right to change specifications and designs without notice and without incurring obligations. Some graphics and details provided courtesy of Entrematic and used by permission.

Proudly Distributed By:

KANSAS CITY, MISSOURI



"Experience the Quality"

[www.deldenmfg.com](http://www.deldenmfg.com)

©2023 Rev 10/20



WIND LOAD APPROVED  
DOORS AVAILABLE

