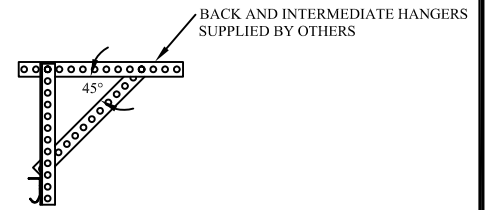
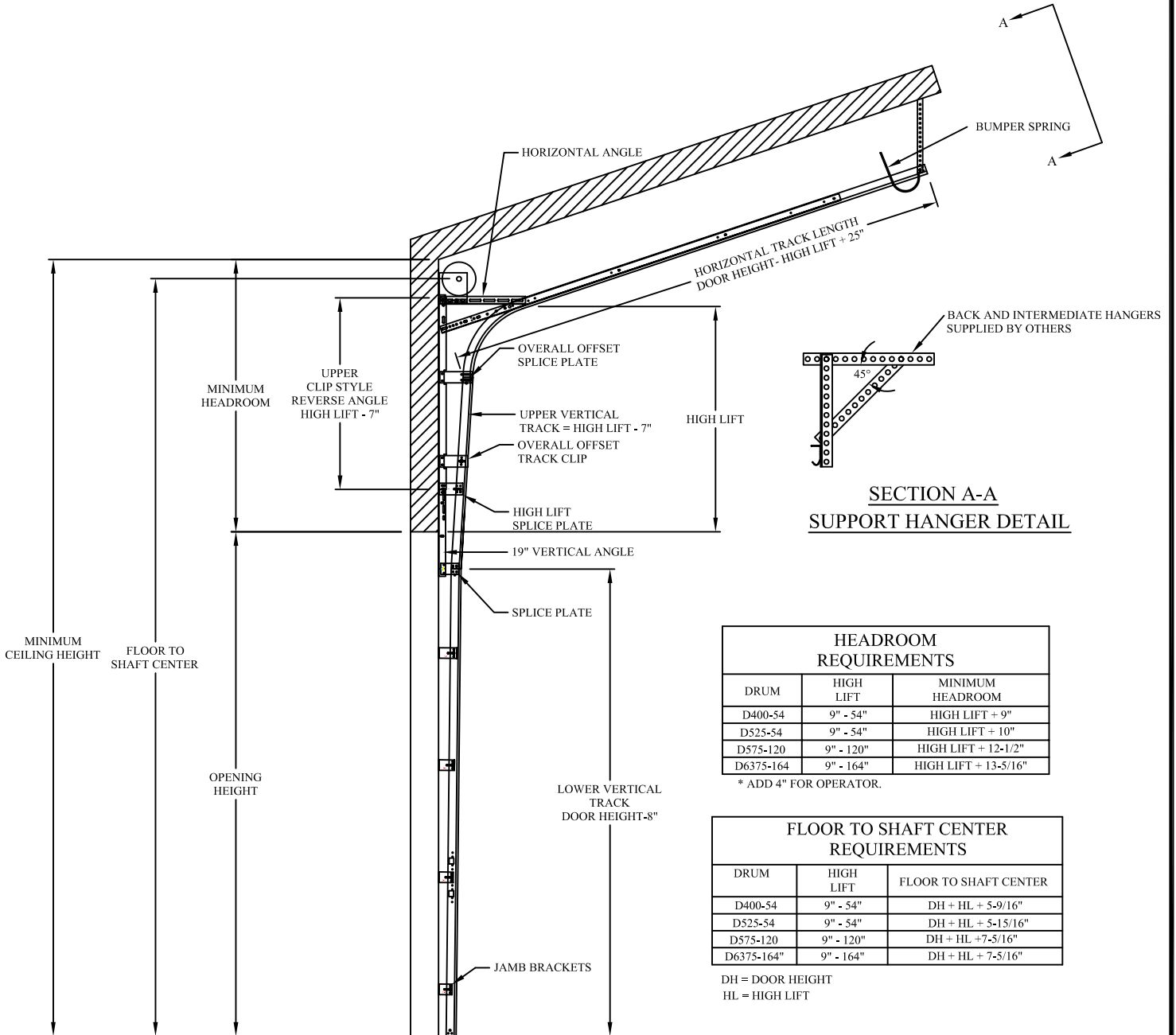


HIGH LIFT STANDARD FOLLOW THE ROOF PITCH TRACK SET DETAIL  
2" BRACKET MOUNT



GARAGE DOORS



SECTION A-A  
SUPPORT HANGER DETAIL

HEADROOM REQUIREMENTS		
DRUM	HIGH LIFT	MINIMUM HEADROOM
D400-54	9" - 54"	HIGH LIFT + 9"
D525-54	9" - 54"	HIGH LIFT + 10"
D575-120	9" - 120"	HIGH LIFT + 12-1/2"
D6375-164	9" - 164"	HIGH LIFT + 13-5/16"

\* ADD 4" FOR OPERATOR.

FLOOR TO SHAFT CENTER REQUIREMENTS		
DRUM	HIGH LIFT	FLOOR TO SHAFT CENTER
D400-54	9" - 54"	DH + HL + 5-9/16"
D525-54	9" - 54"	DH + HL + 5-15/16"
D575-120	9" - 120"	DH + HL + 7-5/16"
D6375-164"	9" - 164"	DH + HL + 7-5/16"

DH = DOOR HEIGHT  
HL = HIGH LIFT

HIGH LIFT BRACKET MOUNT TRACK SET DETAIL